



**SRG Ad Hoc Committee
Presentation to the Board of Selectmen
January 8th, 2024**

Trail Usage Continues to Grow

- 2021 Daily Usage averaged 450
- 2022 Daily Usage averaged 468
- 2023 Daily Usage averaged 561

This represents a 20% increase
from 2022 to 2023

Of the 30 towns participating in
the census data, Brookfield ranks 3rd.



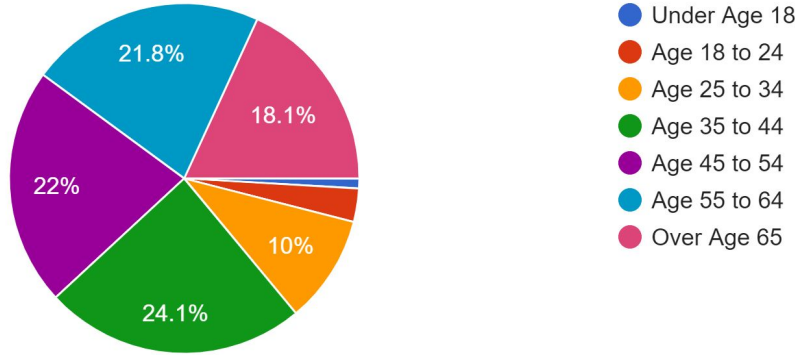
Still River Greenway Survey
June 2023 to November 2023
557 Survey participants
292 email addresses for follow up

Methods:

- 6 lawn signs were placed along the Greenway and outside businesses at the Town Center.
- A flyer was placed at the YMCA. Participants scanned a QR code from the sign to access the survey.
- Brookfield Parks and Recreation Department sent an email with a link to the survey to enlisted members of their department.
- Participants had the option of including their email at the end of the survey. 52% agreed to receive additional information about the progress of expanding the trail North to New Milford.

1. Please provide the age of the person completing this survey.

551 responses

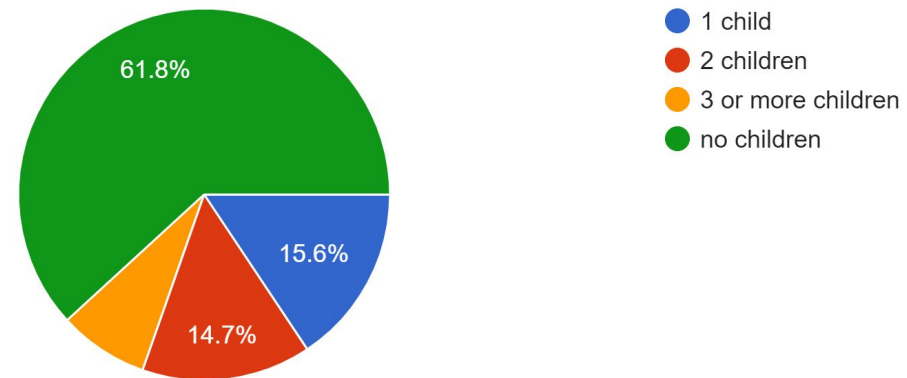


62% of survey respondents said they do not bring children to the Greenway. 38% of SRG users are children and families. Initiating programming for families has the potential to improve usage.

67% of participants were between the ages of 35 and 64.

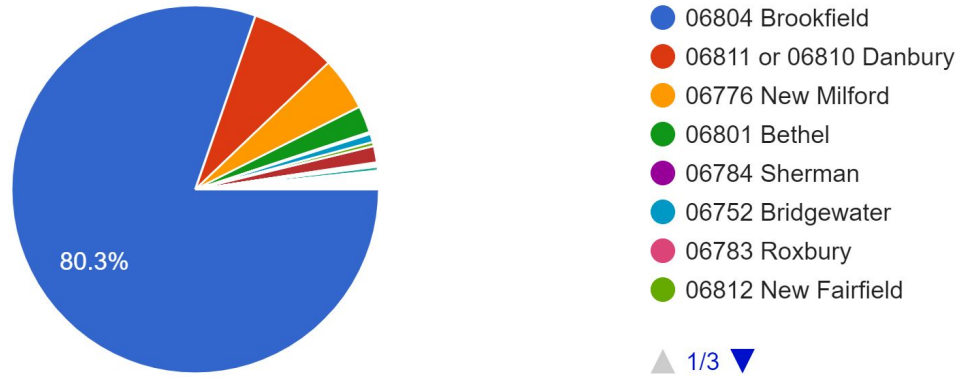
3. Please tell us the number of children with you today or when you use the trail.

550 responses



4. Please check the zip code of where you live

554 responses

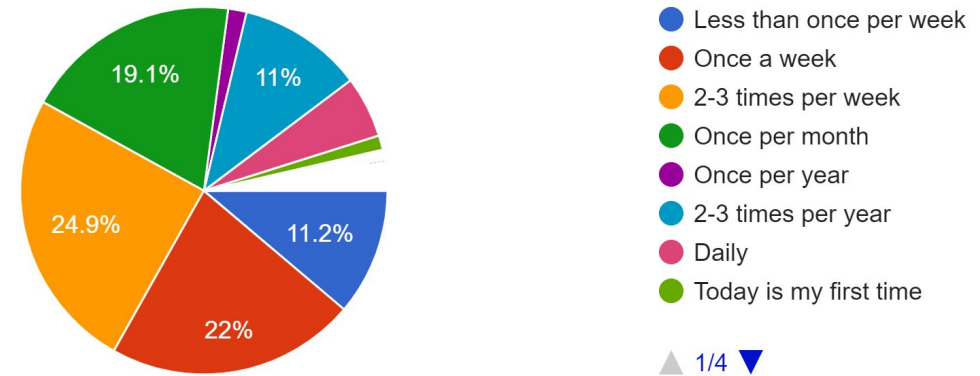


The SRG is most popular among Brookfield residents with 46% of those surveyed using it between 1 and 3X per week.

Danbury and New Milford residents also frequent the SRG trail. Expanding the SRG would increase town connectivity and trail use.

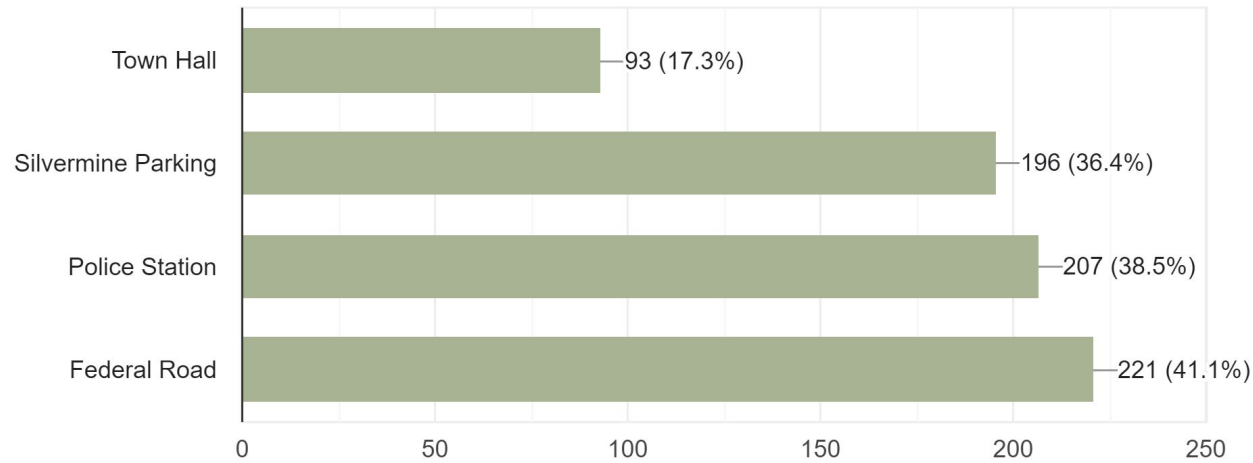
5. How often do you use the Still River Greenway?

555 responses



7. Where do you park to use the Still River Greenway?

538 responses

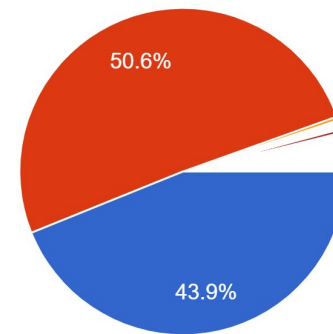


The added Federal Road parking spaces improved access to the SRG Trail.

Most users of the SRG have no trouble finding parking for the current trail.

8. Have you ever had to wait for a parking spot?

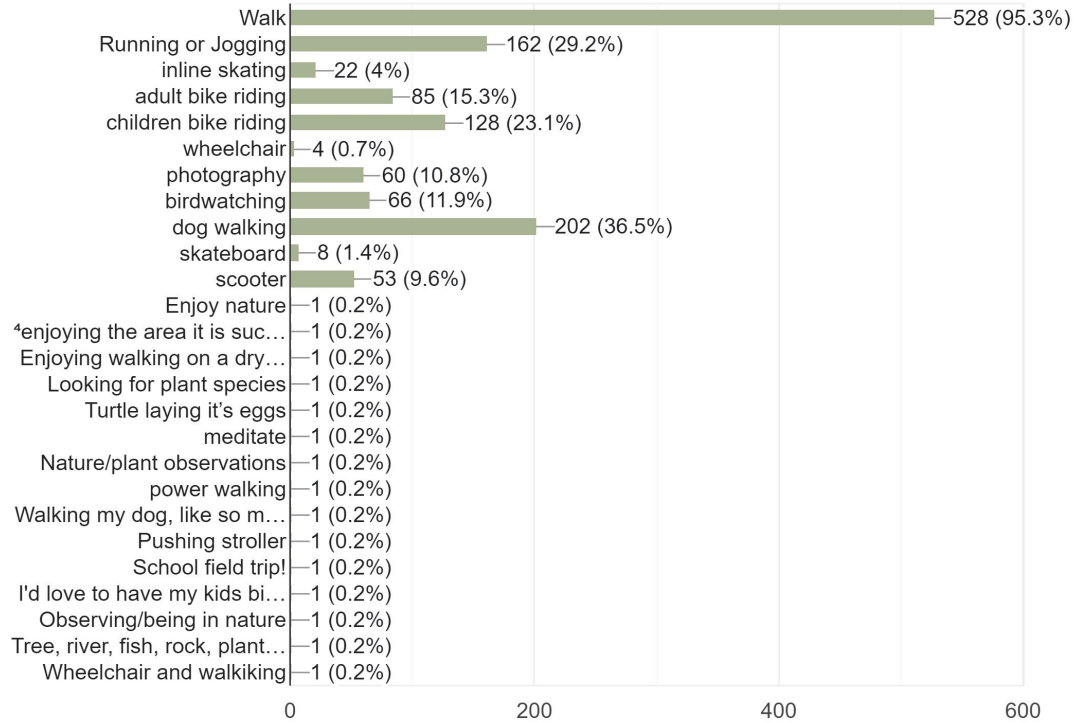
549 responses



- Yes
 - No
 - N/a
 - Only once, and moved to town hall
 - No just drive over to town hall parking
 - If there is no parking, I go somewhere...
 - Can always find one in on of the lots
 - I live within walking distance
- ▲ 1/4 ▼

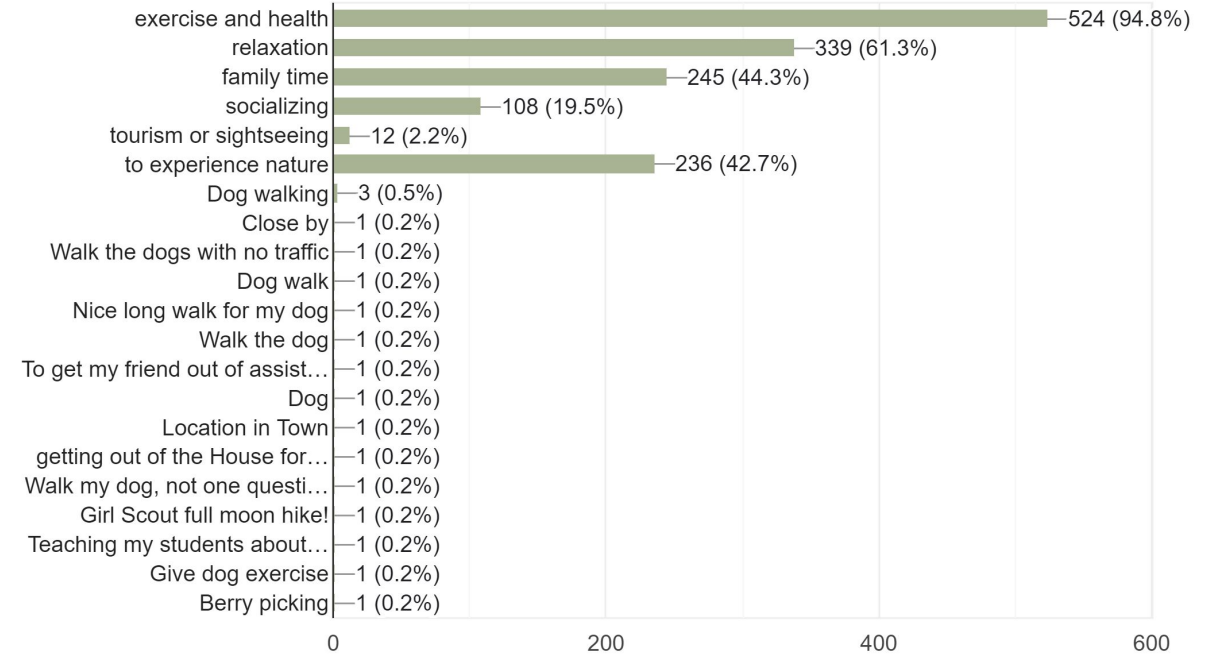
10. What activities do you participate in while using the Still River Greenway? (check all that apply)

554 responses



11. The main reason I use the Still River Greenway is for...(Check all that apply)

553 responses

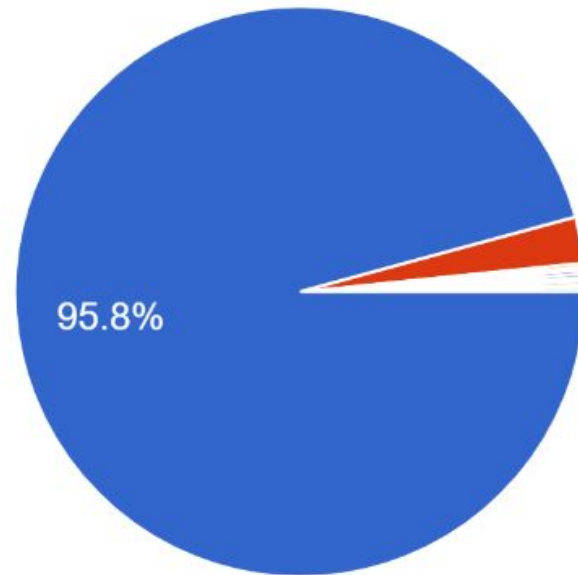


The primary use for the current trail is walking with the purpose of exercising for health. Dog walking, recreation and experiencing nature and the outdoors are also popular responses for using the trail. The trail is used between 30 and 90 minutes by 95% of users

There is widespread support for extending the Greenway

14. If the town of Brookfield received Grant funding to expand the Greenway North to New Milford, would you support the initiative?

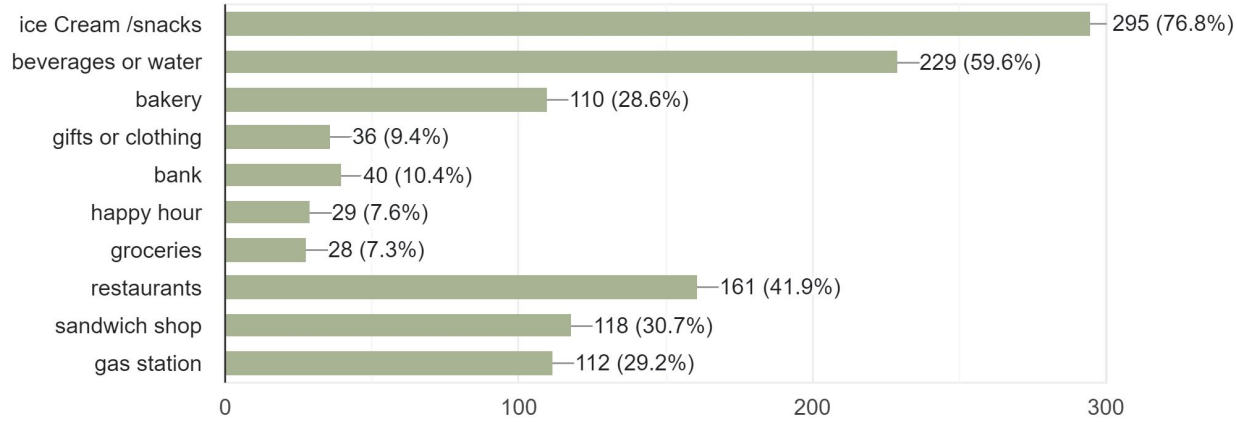
498 responses



- Yes
- No
- Yes, and also south to Golf Quest! Ma...
- Yes if it doesn't involve taking private...
- Yes, but I would love if the Greenway...
- No opinion
- The only people I see using it is bikers...
- Not sure

15. Have you frequented any businesses with a purchase in the newly developed Town of Brookfield while using the Still River Greenway? (Check all that apply)

384 responses

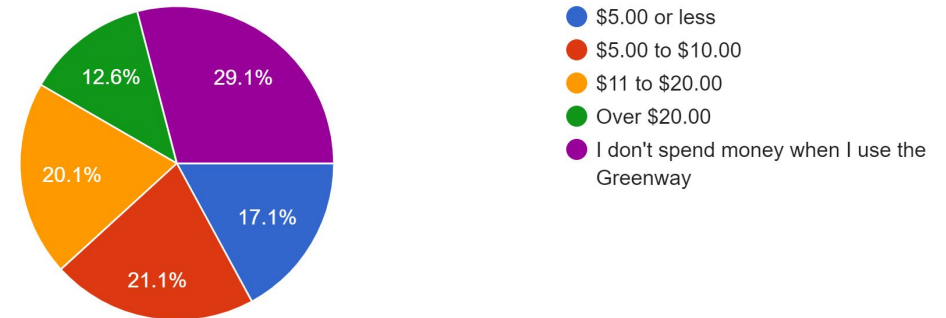


The SRG offers additional economic value to the newly developed downtown Brookfield.

16. If you checked a box in question 12, please estimate how much money you spend per trip to the Still River Greenway?

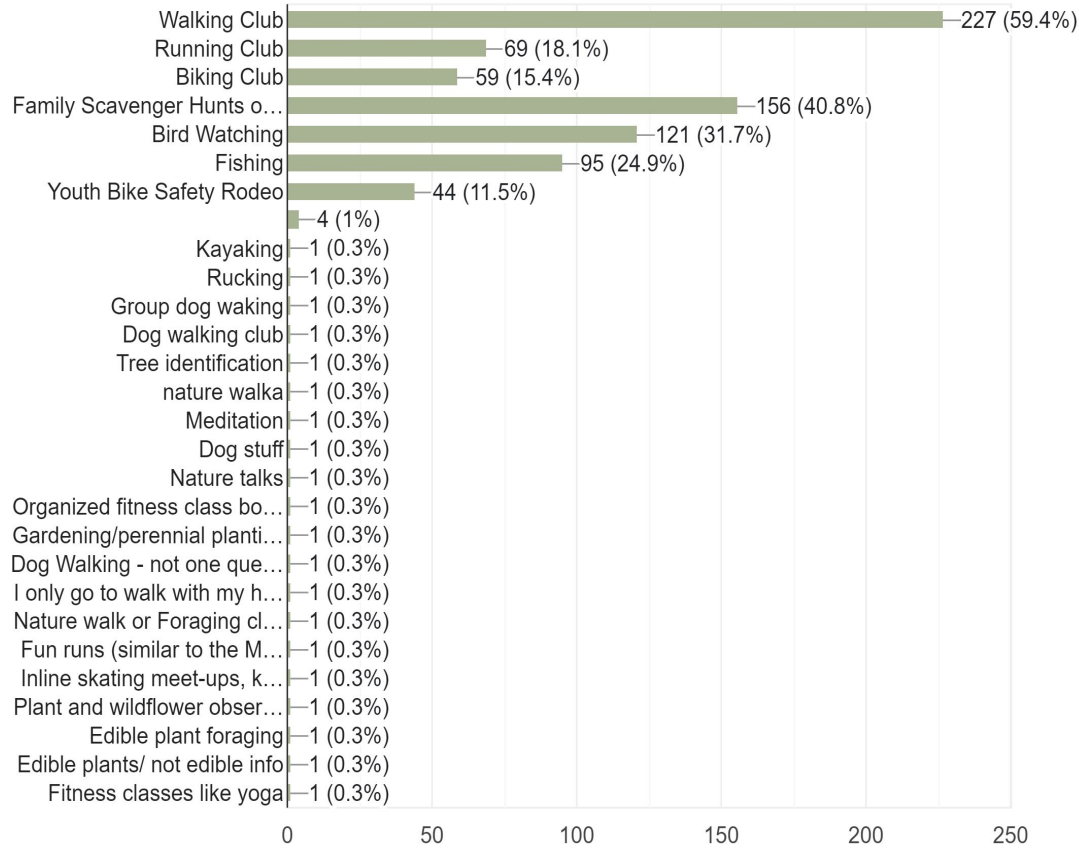
492 responses

70% of participants said they spend money in town while using the trail



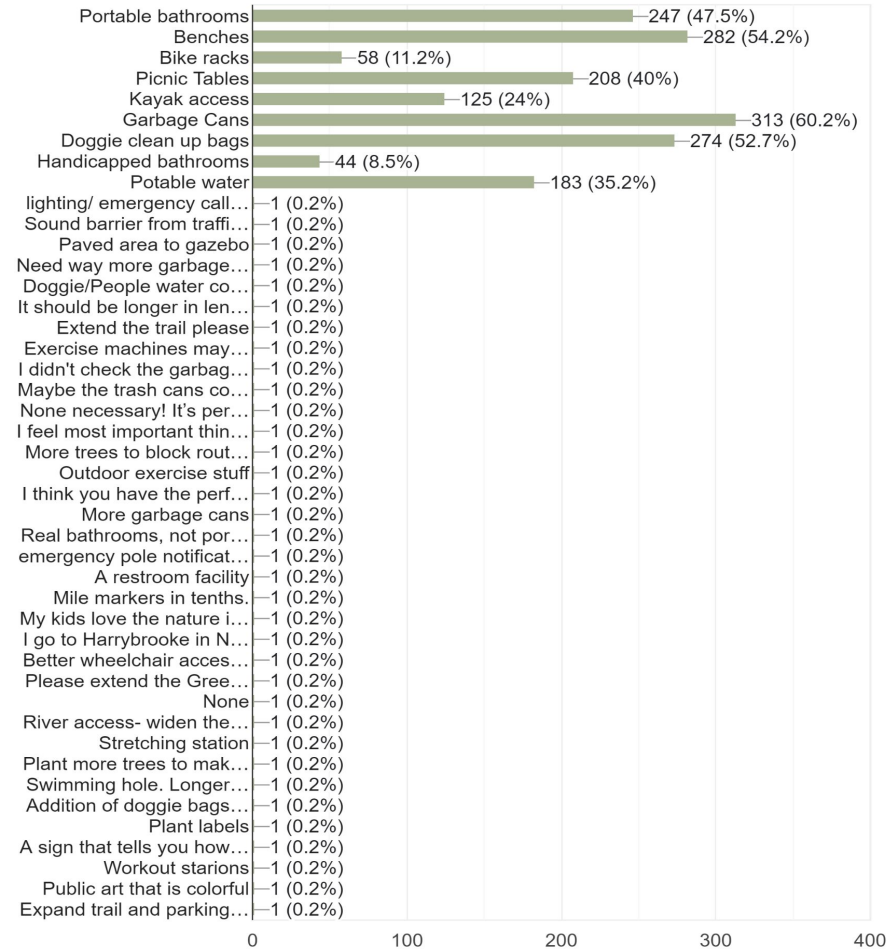
17. Please check any programs you would consider participating in on the Still River Greenway.
(Check all that apply)

382 responses



13. Please check amenities you would like to see on the Still River Greenway. (check all that apply)

520 responses

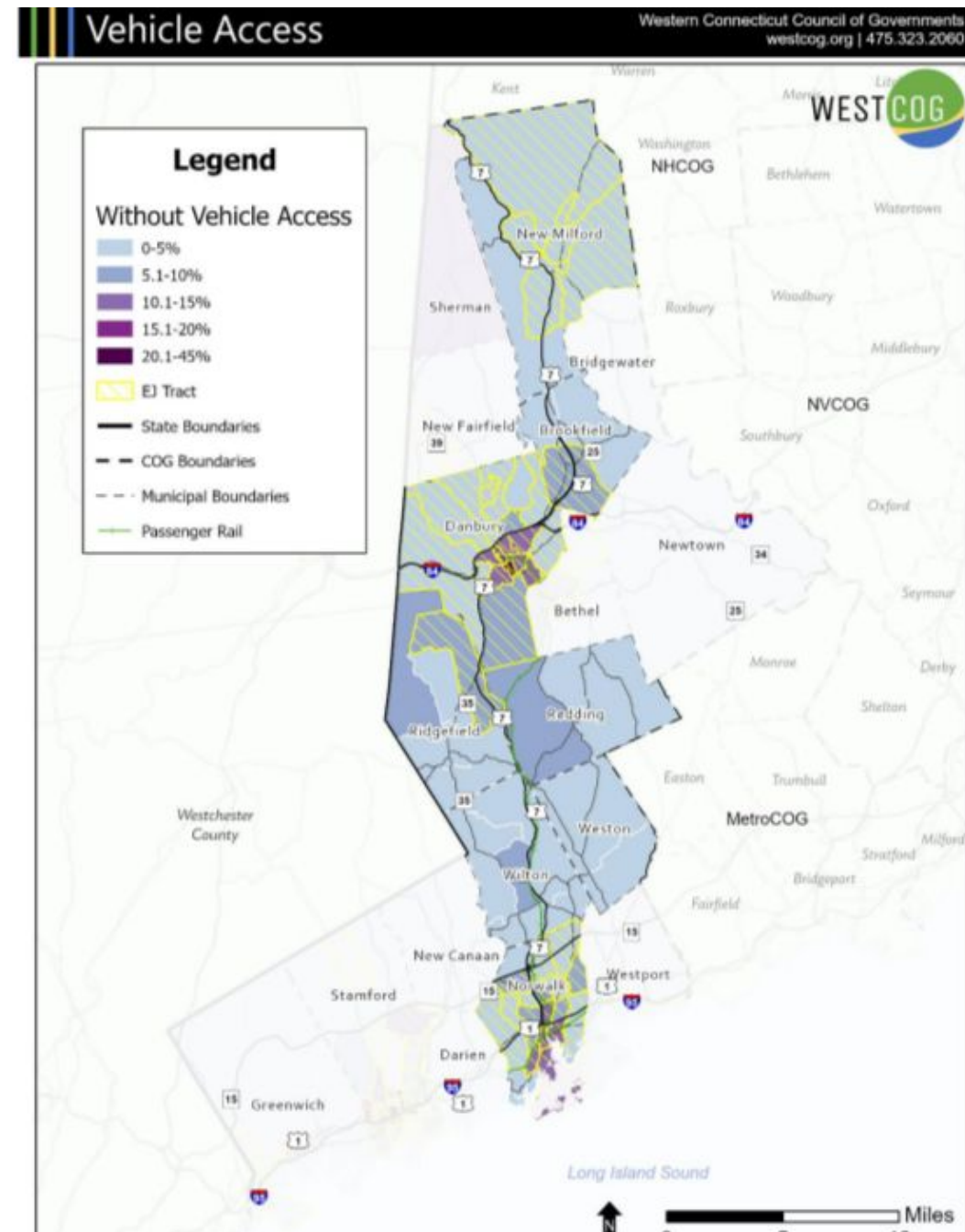


There is interest in walking, running and biking clubs. Families would enjoy scavenger hunts. Opportunities to promote bird watching was also popular. Benches, picnic tables, garbage cans and access to water were popular amenities that trail users would like to have.

Norwalk Valley River Trail Grant- Excerpt from Press Release

“The Western Connecticut Council of Governments (WestCOG) and the Friends of the Norwalk River Valley Trail (NRVT) are pleased to announce that USDOT has awarded \$4,528,000 for the Western Connecticut Regional Trail Bicycle and Pedestrian Planning project through the Rebuilding American Infrastructure with Sustainability and Equity (RAISE) program.

WestCOG and the NRVT appreciate USDOT’s support in advancing this accessible multi-use trail and their contribution which will fund 80% of the project cost (\$5,660,000).”



Key Points Regarding the Grant

- WestCOG was awarded \$4.53 million in the last RAISE grant round. This award is an 80% reimbursement of the total cost of \$5,566 million.
- The grant application was specifically for planning the final route of the NRVT, providing funding for the study and creation of all the planning and construction documents ("shovel ready") for the remaining 15 miles of the NRVT.
- The planning grant will study the feasibility of connecting the NRVT at its terminus in Danbury with the Maybrook Trail west to New York connecting with the Empire State Trail System and north along the Still River Greenway through Danbury, Brookfield, and New Milford.
- The planning grant also provides for the planning and construction documents ("shovel ready") for the Still River Greenway going *through Danbury, Brookfield, and New Milford*.
- This is a reimbursement grant so WestCOG has to spend the money first and then get 80% returned to them.
- WestCOG Intends to apply for a DEEP grant in March to help cover the cost of the municipalities 20% cost. As of now they intend to request half of the 20%

Estimates for Still River Greenway Studies

**Still River Trail Connection Preliminary Engineering/Feasibility;
Total Cost: \$50,000, RAISE Request: \$40,000**

Prepare a routing study for 6-mile trail to connect to the NRVT at Rogers Park, traveling easterly cross the City to make the connection to the southern terminus of the Still River Trail in Brookfield.

Key Initiatives:

- Provides a long-sought connection between the NRVT, Still River Greenway, and the New Milford River Trail
- Creating a trail along the river is compatible with the Still River Alliance which is restoring the river
- Potential for commuting option, connecting to significant employment opportunities in the Federal Road corridor

**Still River Trail Extension – Brookfield to New Milford Town Line 100% Design/Construction Documents;
Total Cost: \$340,000, RAISE Request: \$272,000**

Design the 1.7-mile extension of the Still River Greenway from its current northern terminus to the New Milford town line. A routing study of this trail segment was completed in 2022.

Key Initiatives:

- Provides construction documents for a portion of the trail that was recently studied
- Connects to the New Milford Trail which adds another 12 miles to trails along the river

Estimated Project Timeline in Months

WESTERN CONNECTICUT REGIONAL TRAIL

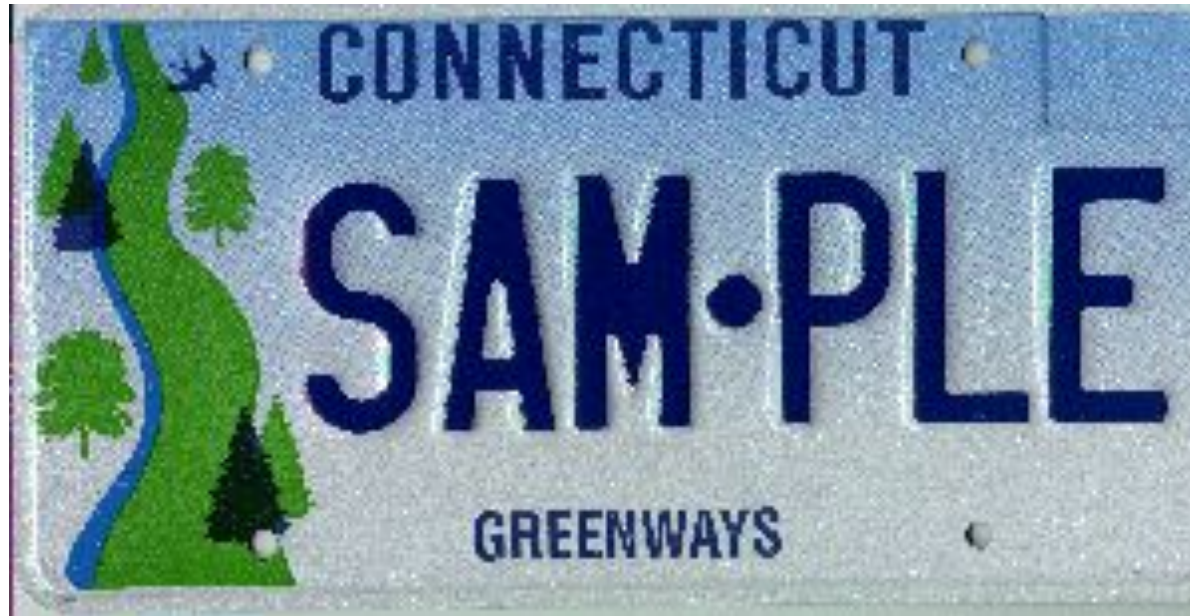
4. PROJECT SCHEDULE

PROJECT SCHEDULE																														
TASK	1	2	3	4	5	6	7	8	9	10	11	12	13	14	15	16	17	18	19	20	21	22	23	24	25	26	27	28	29	30
Prepare RFQ and Select Consultant	█	█	█	█																										
NRVT Routing Study					█	█	█	█	█	█	█	█																		
Complete NRVT Norwalk													█	█	█	█	█	█	█	█	█	█	█	█	█	█	█	█	█	█
Complete NRVT Wilton													█	█	█	█	█	█	█	█	█	█	█	█	█	█	█	█	█	█
Complete NRVT Ridgefield													█	█	█	█	█	█	█	█	█	█	█	█	█	█	█	█	█	█
Complete NRVT Redding													█	█	█	█	█	█	█	█	█	█	█	█	█	█	█	█	█	█
Complete NRVT Danbury													█	█	█	█	█	█	█	█	█	█	█	█	█	█	█	█	█	█
Maybrook Plans																														
Still River Study					█	█	█	█	█	█	█	█																		
Still River Plans													█	█	█	█	█	█	█	█	█	█	█	█	█	█	█	█	█	█
River Trail Plans																														

The proposed project schedule is shown in the table for the various segments of the project. The project will take 30 months to complete.



**Greenways DOT Vanity License Plate Program-
All monies raised go to the CT Greenways Fund**



Thank You!

**SRG Ad Hoc
Committee
Members**

Jay Annis

Bo Dackow

Jim Diezemann

Maureen Farrell

Jean Hartnett

